

HAND PALLET TRUCK INOX KG 2500 TM-20 1150 X 520 MM



Model	CTI4001: Sandblasted stainless steel finishing, for the food sector CTI4002: Sandblasted stainless steel finishing, for the pharmaceutical sector
Dimensions mm	520x1500 H 1215
Fork dimensions mm	1150x520
Capacity kg	2500
Lift height mm	115
Steering wheels	Nylon-polyurethane
Front roller double load	Nylon-polyurethane
Propulsion	Manual
Lift	Manual
Lever control	3 positions
Weight kg	76/80
Material	Stainless steel AISI 304

DESCRIPTION:

Hand pallet truck built entirely in AISI 304 stainless steel (including the lifting pump and the hydraulic components) suitable for use in humid and corrosive environments where impeccable cleaning and hygiene are required and to solve problems of corrosion related to the use of acids and saline solutions. The bearings are waterproof and the bushings are constructed of polyamid material as required by the food industry. Optimal for use in the food, chemical and pharmaceutical industries. Resistant, easy to handle and with an ergonomic design, it fully responds to the most severe hygiene requirements by being able to be sanitized with regular high pressure washing. Available in the AISI 316 stainless steel version.

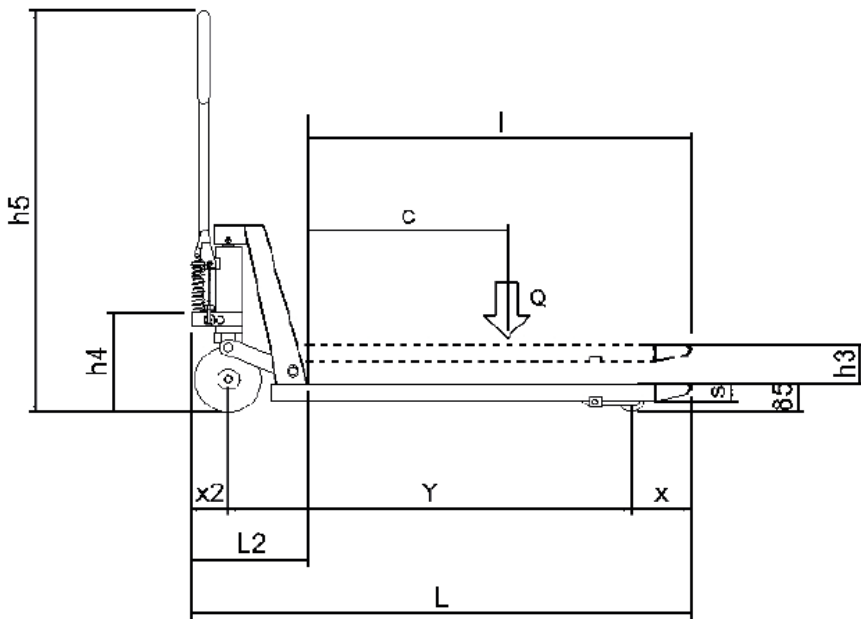
TECHNICAL FEATURES:

- Frame resistant to aggressive and corrosive environments
- Ergonomic tiller, sturdy and indestructible structure
- Built to be washed and disinfected with a pressure washer limiting risks of microbiological contamination
- Hygiene and easy access to components (reduced cleaning and maintenance costs)
- Easy to maneuver, quick lifting
- Maximum stability
- 70-110 microns glass microspheres stainless steel treatment

OPTIONALS:

- AISI 316 stainless steel
- Tailor-made frame for handling special loads
- Custom fork length
- Non-standard fork width and / or outer gauge
- Treatment for the pharmaceutical sector or cleanroom: satin stainless steel finish

TECHNICAL DESIGN:



Q	t	2.0
C	mm	600
I	mm	1.150
L	mm	1.500
X	mm	180
X2	mm	150
Y	mm	1.200
L2	mm	350
L1	mm	1.500
M	mm	520
N	mm	165
B	mm	520
S	mm	50
H3	mm	115
H4	mm	300
H5	mm	1.215
A	mm	100
WA	mm	1.280
AST3	mm	1.700
PESO	Kg	76/80

