

INOX ELECTRIC HIGH LIFT PALLET TRUCK KG 1000 TMS-80E LIFTING 800 MM



Model	CTI8001: Sandblasted stainless steel finishing, for the food sector CTI8002: Sandblasted stainless steel finishing, for the pharmaceutical sector
Dimensions mm	550 x 1750 H 1187
Fork dimensions mm	1150 x 550
Capacity kg	1000
Lift height mm	115/800
Steering wheels	Nylon-polyurethane
Front roller single load	Nylon-polyurethane
Lateral stabilizing rollers	Teflon
Propulsion	Electric
Lift	Manual
Weight kg	149
Material	Stainless steel AISI 304

DESCRIPTION:

Inox electric high lift pallet truck lifting up to 800 mm designed to position the goods at the ideal height and reduce the operator's effort during the picking and depositing of the goods. It is built entirely in AISI 304 stainless steel (including the lifting pump and hydraulic components), suitable for use in humid and corrosive environments where impeccable cleaning and hygiene are required and to solve corrosion problems related to the use of acids and saline solutions. To ensure load stability and operator safety, stabilizing rollers are mounted on the side that rest on the ground as soon as the load is lifted. The bearings are waterproof and the bushings are made of polyamide material for the food industry. Optimal for use in the food, chemical and pharmaceutical industries. Resistant, easy to handle and with an ergonomic design, it fully responds to the most severe hygiene requirements as it can be sanitized with regular high-pressure washing.

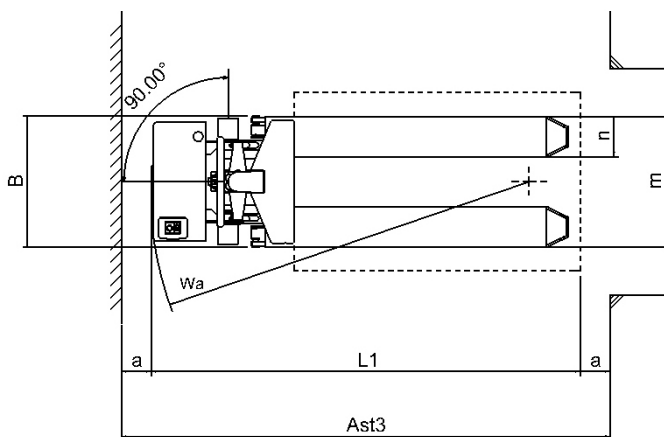
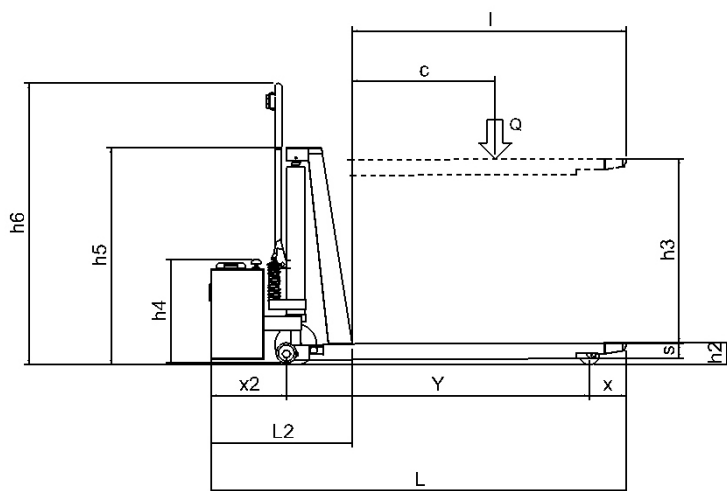
TECHNICAL FEATURES:

- Frame resistant to aggressive and corrosive environments
- Ergonomic tiller, sturdy and indestructible structure
- Built to be washed and disinfected with a pressure washer limiting the risks of microbiological contamination
- Hygiene and easy access to components (cleaning and maintenance costs reduced)
- Easy to maneuver, quick lifting to the desired working height
- Maximum lateral stability with raised forks
- 12V 75Ah monobloc gel battery connected to a battery charger on the machine
- 12V 10A on-board current rectifier
- For recharging, a cable with Schuko plug is supplied to be connected to the normal mains electricity supply with full recharge in 20 hours (with suggested initial charge current of 15A)
- Battery life depends on many factors, including shifts of use and charging methods (whether partial or total recharges are performed)
- 70-110 microns glass microspheres stainless steel finish treatment

OPTIONALS:

- AISI 316 stainless steel
- Tailor-made frame for handling special loads
- Non-standard fork length and width
- Treatment for the pharmaceutical sector and for the cleanroom: satin stainless steel finish

TECHNICAL DESIGN:



Q	t	1.0
C	mm	600
I	mm	1.150
L	mm	1.750
X	mm	155
X2	mm	323
Y	mm	1.272
L2	mm	600
L1	mm	1.750
M	mm	550
N	mm	170
B	mm	550
S	mm	45
H2	mm	95
H3	mm	700
H4	mm	450
H5	mm	920
H6	mm	1.187
A	mm	100
WA	mm	1.450
AST3	mm	1.950
BATTERIA	V/Ah	12/75
RADDRIZZATORE	V/A	12/10
PESO	Kg	149